

A REVIEW INTO THE OPERATION OF CARE AND SUPERVISION UNITS IN THE NORTHERN IRELAND PRISON SERVICE

A FOLLOW-UP REVIEW OF RECOMMENDATION IMPLEMENTATION

Criminal Justice Inspection
Northern Ireland
a better justice system for all



PREVIOUS INSPECTION RECOMMENDATIONS

3 STRATEGIC RECOMMENDATIONS AND 11 OPERATIONAL RECOMMENDATIONS FOR IMPROVEMENT



Achieved

1 strategic recommendation

7 operational recommendations



Partially achieved

2 strategic recommendations

1 operational recommendation



Not achieved

3 operational recommendations

A REVIEW INTO THE OPERATION OF CARE AND SUPERVISION UNITS IN THE NORTHERN IRELAND PRISON SERVICE

A FOLLOW-UP REVIEW OF RECOMMENDATION IMPLEMENTATION

Criminal Justice Inspection
Northern Ireland
a better justice system for all



GOOD PROGRESS



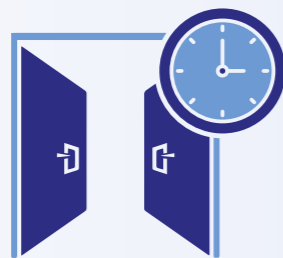
Relationships between operational prison and health care staff were good



Better access to learning and purposeful activity and opportunities to continue learning programmes



Access to facilities



Prisoners reported better experiences of being in a CSU and the average time they spent out of their cells had increased



The length of time patients had to wait to transfer to a hospital had improved although some patients continued to wait too long



Better corporate and operational oversight



Staff better supported and equipped and training had been delivered

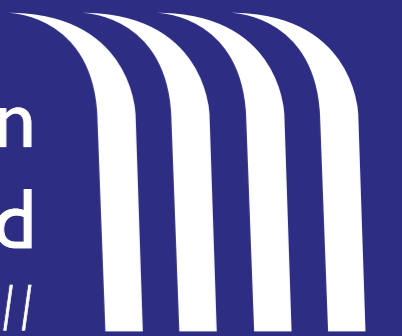


Women and men held in separate CSUs at Hydebank Wood

A REVIEW INTO THE OPERATION OF CARE AND SUPERVISION UNITS IN THE NORTHERN IRELAND PRISON SERVICE

A FOLLOW-UP REVIEW OF RECOMMENDATION IMPLEMENTATION

Criminal Justice Inspection
Northern Ireland
a better justice system for all



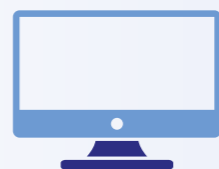
WORK IN PROGRESS



Improvement to living conditions at Maghaberry



Implementation of revised Rule 32 policy and impact of standardisation meetings



Use of data to improve monitoring and oversight



Ongoing review of staff training needs



Provision for those with severe mental disorders



Sharing of information to improve learning outcomes



Sharing of information to improve patient care



Access to out-of-hours mental health crisis response

A REVIEW INTO THE OPERATION OF CARE AND SUPERVISION UNITS IN THE NORTHERN IRELAND PRISON SERVICE

A FOLLOW-UP REVIEW OF RECOMMENDATION IMPLEMENTATION

Criminal Justice Inspection
Northern Ireland
a better justice system for all



WHAT ARE CSUs USED FOR?

CSUs are dedicated units in Northern Ireland's prisons where prisoners are segregated for their own safety, the safety of others, for breaking Prison Rules or because they are suspected of having drugs or other illicit items.